

All-in-One, Fully Integrated Cloud-Based
Business Continuity Management
and Resilience Software Suite

RecoveryPlanner

RecoveryPlanner is an award-winning, recognized industry leader for end-to-end business continuity management (BCM) and resilience software with deep, mature functionality. Meet pertinent BCM regulations, standards, and best practices while implementing a collaborative, enterprise-wide BCM program with this scalable software.

Used by organizations in all industries and sizes and tailored for BCM, RecoveryPlanner is ideal for organizations looking for a tool to support a comprehensive BCM program that also helps to build resilience in systems and operations. RecoveryPlanner has broad, customizable, and flexible functionality for experienced practitioners yet is simple enough for casual users.



Business Impact Analysis

Make BIA data collection easier with a customizable tool that will guide stakeholders through the process. Prioritize business processes and understand their dependencies and interdependencies. Establish recovery strategies and controls.



Risk Assessment

Produce, track, and report on risk assessments for availability, IT, and 3rd parties. Use the risk survey samples provided or create your own. Customize and send emails based on who is responding, whether they are personnel or 3rd parties.



Vendors and 3rd Party Resilience

Perform vendor management by making 3rd party assessments and easily including them in BIAs and plans.



Plan Creation, Maintenance, and Management

Use the included plan templates or create your own. Develop and maintain any type and number of plans with schedules, reminders, alerts, and to-do automation.



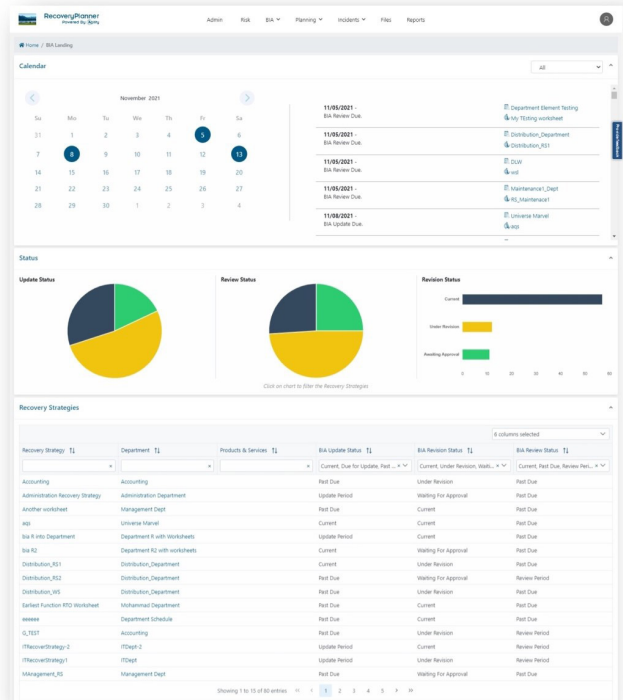
Exercise and Crisis/ Incident Management

Make activation, management, and participation easier with automatic creation of and easy access to actionable plans. Utilize analytics and dashboards for incident status. Review and create corrective actions with automatic audit trails. RecoveryPlanner integrates with Agility Alerts for a best-of-breed notification system, all from one location.



Compliance and Reporting

Align with industry, regulatory, and organizational standards using RecoveryPlanner's default or customized reports, BCM metrics, analysis, dashboards, and BCM compliance mapping. Choose from hundreds of default reports. Track and report on program updates and business unit compliance to ensure updates are made per key deliverables.



With an end-to-end solution, such as Agility Recovery, businesses can recover **4 times faster** than with no BCM solution.