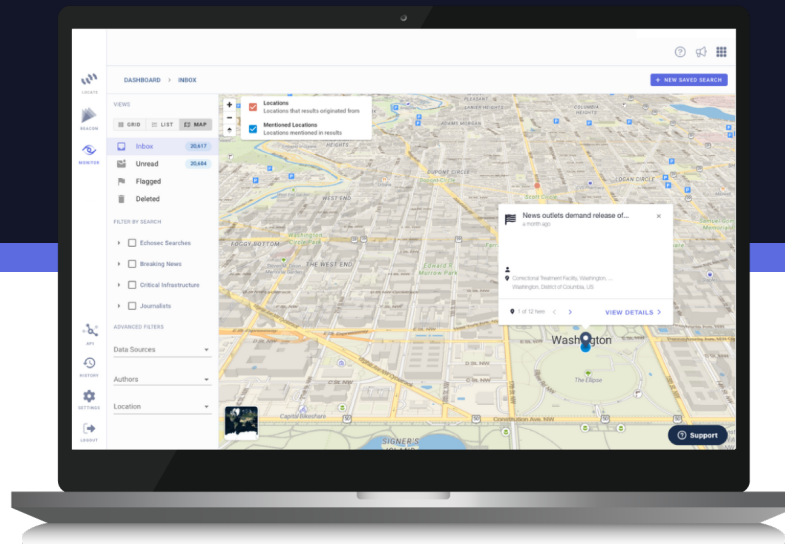


Flashpoint Physical Security Intelligence (PSI)

Real-time open-source intelligence (OSINT) and critical alerts to protect people, places, and assets

Protect the locations and assets that matter with access to an extensive range of publicly available information (PAI), intuitive analytical functionality, and industry-leading geospatial insights.

Flashpoint PSI supports critical workflows for Physical Security teams. The solution allows organizations to monitor key locations and topics, get real-time alerts about relevant events, investigate incidents to inform future strategies, and equip their teams with the information needed for proactive, intelligence-led physical security.



Flashpoint PSI benefits

- ✓ **Improve situational awareness** with real-time data from social media and online discussions
- ✓ **Accelerate investigations** with geospatial enrichments, language detection, and advanced search filters
- ✓ **Protect executives, locations, and assets** with 24/7 monitoring
- ✓ **Bolster your team** with one-click access to our intelligence experts
- ✓ **Identify relevant risks** with intuitive Boolean search and custom alerts
- ✓ **Supplement your intelligence** with access to finished reports from Flashpoint's Intelligence Team
- ✓ **Quickly find the intelligence** you need using Ignite AI

What's included

ECHOSEC, BY FLASHPOINT

Real-time, precise geospatial search: Create a bounding box over any location in the world by typing in an address or using map-drawing tools, and immediately see the social media posts originating from that location.

Geospatial enrichments via natural language processing (NLP): Unlock expanded geospatial data with the ability to map online discussions based on locations referenced in post contents or metadata.

Persistent monitoring and alerts: Identify relevant, time-sensitive risks with 24/7 monitoring and real-time alerts based on search criteria, delivered via email or webhook.

Actor insights: Quickly generate a profile with key information about a specific internet user including active communities, recent posts, previously linked locations, mentions, and media.

Analytics and visualization: Observe trends and patterns in a customizable dashboard, including an inbox for reviewing and sharing results, and a map view for geospatially enriched data.

Global translation: Instantly translate search queries in over 100 languages, and add the translated query to your search in just a few clicks.

FINISHED INTELLIGENCE REPORTS

Get **timely intelligence** generated by our team of expert analysts. Viewable in a news-style dashboard or by geographic region, Intelligence Reports provide details on geopolitical regions, ongoing incidents, and threat actors and groups to provide an in-depth picture of today's physical security landscape.

Use **Ignite AI** to ask questions using natural language search and receive answers from Flashpoint Intelligence Reports.

REQUEST FOR INFORMATION

Request and receive information from our intelligence team at the click of a button. Through the RFI process, our intelligence analysts field questions and conduct research inside closed illicit online communities and open sources to provide original, unique analyses.

ABOUT FLASHPOINT

Trusted by governments, commercial enterprises, and educational institutions worldwide, Flashpoint helps organizations protect their most critical assets, infrastructure, and stakeholders from security risks such as cyber threats, ransomware, fraud, physical threats, and more. Leading security practitioners—including physical and corporate security, cyber threat intelligence (CTI), vulnerability management, and vendor risk management teams—rely on the Flashpoint Intelligence Platform, comprising open-source (OSINT) and closed intelligence, to proactively identify and mitigate risk and stay ahead of the evolving threat landscape. Learn more at flashpoint.io.