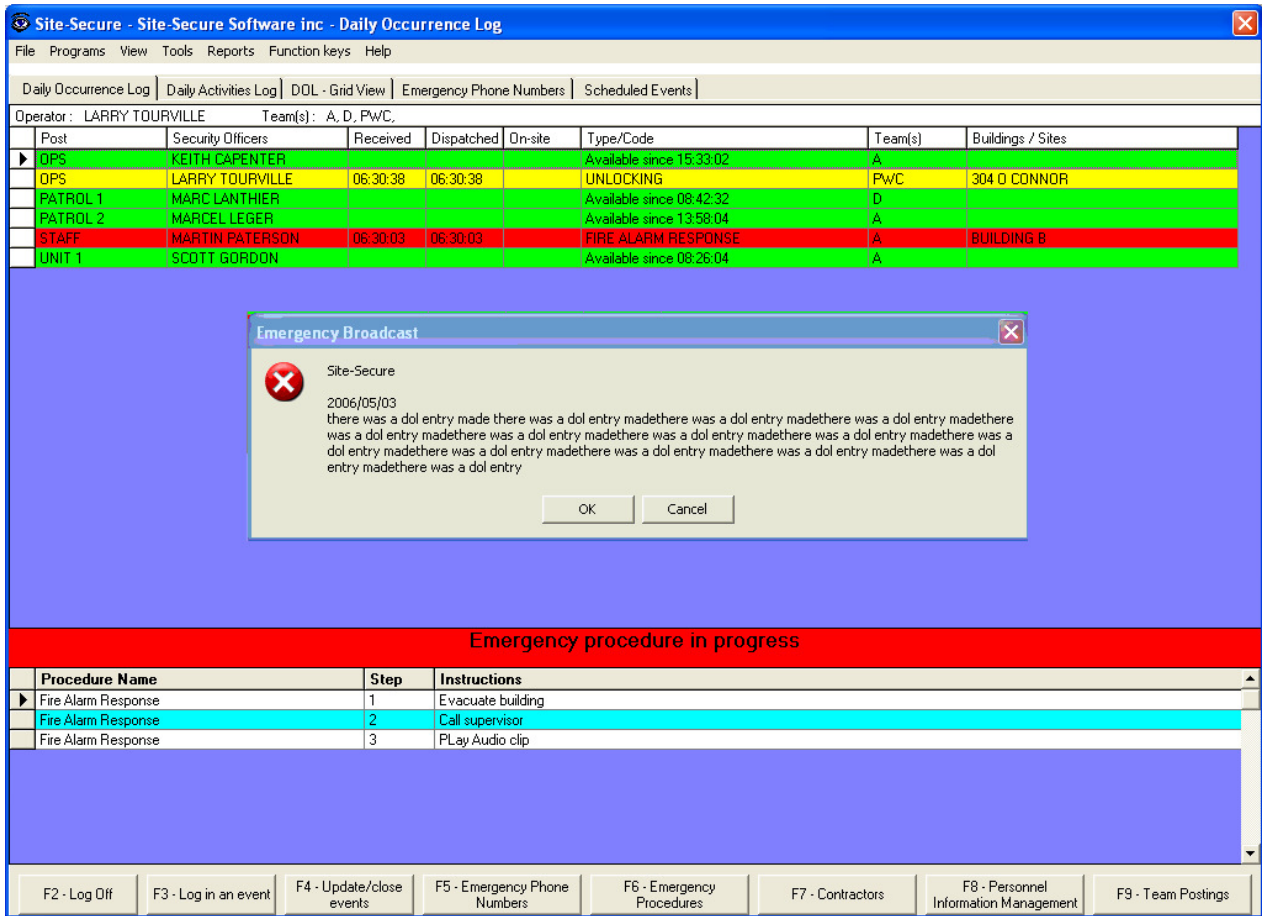




Daily Occurrence Log Module

The daily occurrence log (DOL) module is effectively two logs in one, namely, logs of expected and unexpected activities. The day's expected activities can be entered by members of management or a designate, days or even hours before the activity occurs. E-Mail messages can be automatically sent to employees notifying them of an event that is occurring. This helps to ensure no surprises occur for those in charge. In the event of an emergency, appropriate instructions appear at the bottom of the screen, which must all be executed to clear the emergency. Speed keys can be used by guards or receptions to enter occurrences as they happen, with the added ability to add freehand details of the occurrence as needed. In some organizations these occurrences can number 6000 to 8000 per month or more. The ability to quickly sort and report on that data is important, particularly if it is required as part of an internal or external investigation. The «**DAILY OCCURRENCE LOG**» integrates with multiple Site-Secure Modules.



FEATURES

Occurrences are date time stamped
Pass over log
Automatic email notifications
Equipment/Key Issuance
Alarm events
Color coded activities
Daily activities log
Automatic email alert notification
Include attachments to Log entries
Tracking of invoicing information

Scheduled Events/Activities
Security escort requests
Multi-lingual display
Automatic recording of operator logging the occurrence
Emergency procedures and Emergency Call Lists
Cascading menus for localization information
Unlimited number of characters of occurrence detail
Automatic sequential numbering of occurrences
Automatic time tabulation for occurrences
Tracking of work shifts and Team Postings

Daily Occurrence Log - Bring Forward

Time for message 10 50 (hh:mm) (00:00-23:59)

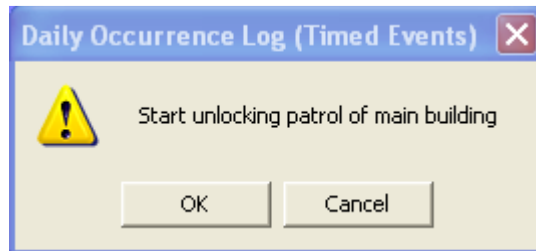
Date for message 08/15/2005

Restrict to Site Building A

English message Sample bring forward message

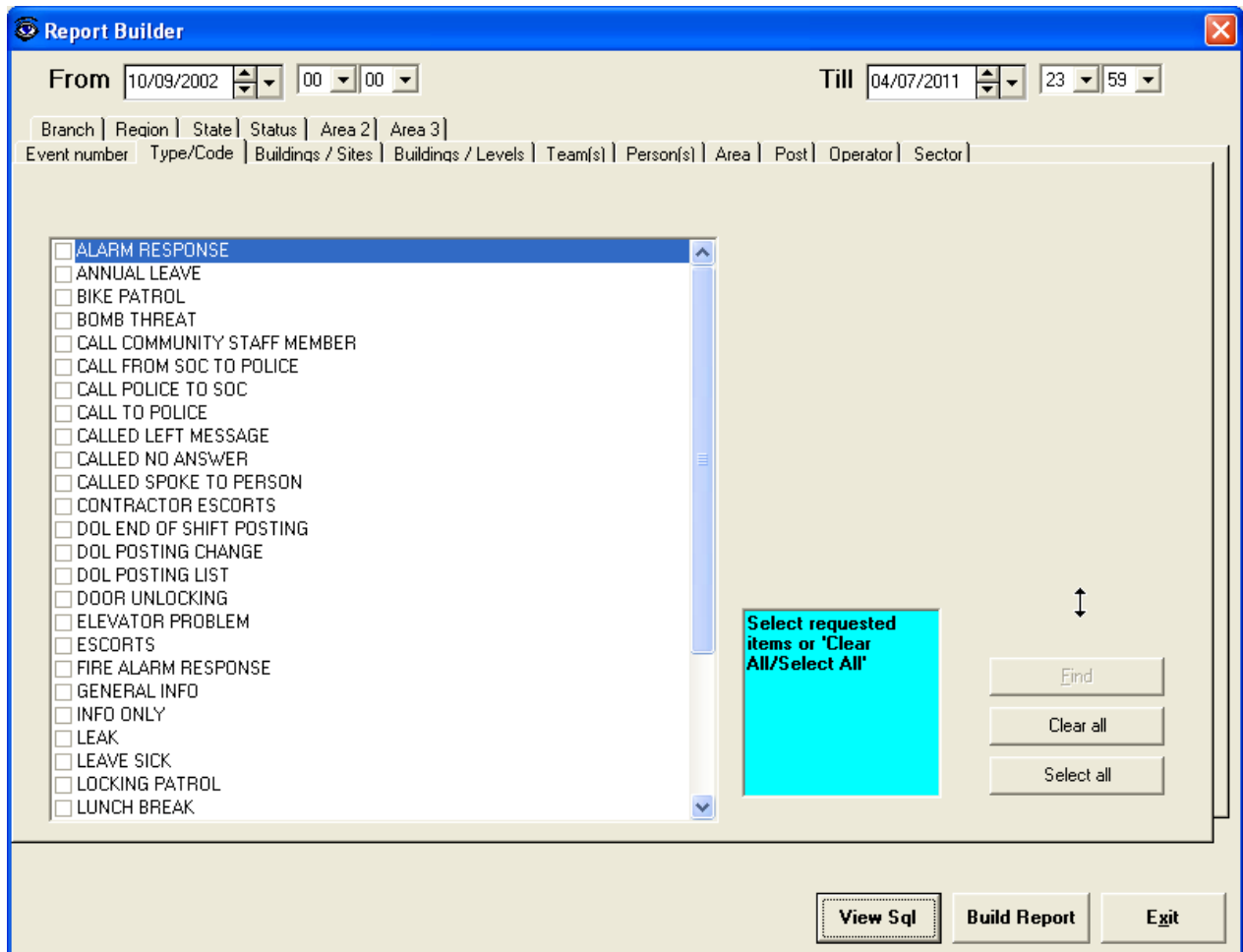
French message Présentation Site-Secure

Add Save Print Listing Delete Exit



EXTENSIVE REPORT CAPABILITIES

With the Site-Secure Report Builder, an almost infinite number of reports can be generated for data analysis and statistical reporting.



Also included are built-in «**QUICK REPORTS**» such as:

- ✓ Report by occurrences by operator
- ✓ Report by occurrences per site
- ✓ Report by elapsed time for occurrences
- ✓ Tabulation of occurrences handled per operator per shift
- ✓ Tabulation of occurrences per shift, day, week or month
- ✓ Report by Team/Work group
- ✓ Custom queries, custom reports
- ✓ Multiple sort orders for report printing

WEB BASED REQUEST FORM

Web based requests using a simple data entry form. This permits all employees to directly request additional security requirements freeing up the call center's time. Site-Secure will improve your corporate image by reducing response times with quick and efficient tools.



The screenshot displays the Site-Secure web-based request form. The header includes the Site-Secure logo (an eye icon), the text "SITE SECURE", a "Security Requests" link, the user name "johrober", and language options for "[English]" and "[Français]". The main form area is a light blue box containing the following fields:

- Request Number:** Record_ID
- Date Entered:** 2011 July 4 11 : 08
- Requested By Name:** Larry Tourville
- Requested By Phone:** 819-555-1212
- Requested By Email:** larry.tourville@videotron.ca
- Department:** Security
- Event Name:** Blues Fest
- PO Number:** 12568
- Start Date Time:** 2011 July 4 19 : 30
- End Date Time:** 2011 July 4 21 : 30
- Number Of Guards:** 22
- Site:** BUILDING A
- Level:** LEVEL 10
- Area:** Field
- Details:** General Security

At the bottom of the form are four buttons: "Save", "Clear", "My Requests", and "Exit".