

# CAPpremium

*SITE REPORT*

<b>CRIMECAST®</b> prepared by CAP Index, Inc.	1:3 Site Report Map
	1:3 Site Report Scores
	National Trending Graph
	Proximity Analysis Map
	Proximity Analysis Report
	2008 FBI Uniform Crime Report (UCR) Data
	Appendices
	About this Report
	Frequently Asked Questions
	Terms and Conditions

CAP Index, Inc.  
Charleston Riverdogs  
360 Fishburne Street  
Charleston, SC 29403-4770  
Lat: 32.7903, Lon: -79.9597

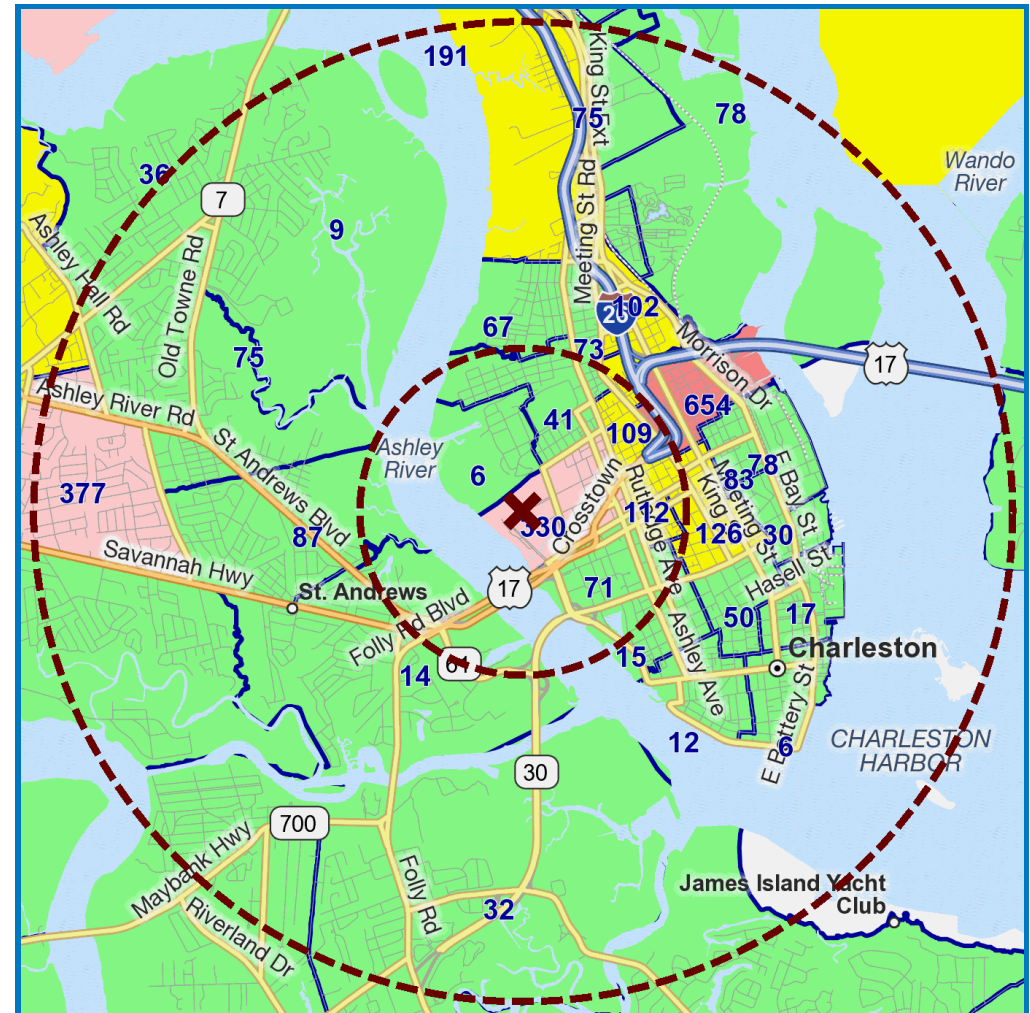
This Site's National CAP Index

**310**

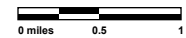
Current Scores (2010)	National	State	County
<b>CAP Index</b>	<b>310</b>	<b>504</b>	<b>300</b>
Homicide	458	573	365
Rape	373	404	238
Robbery	274	489	298
Aggravated Assault	374	512	328
Crimes Against Persons	358	525	325
Burglary	152	169	126
Larceny	159	175	138
Motor Vehicle Theft	118	219	122
Crimes Against Property	132	155	117

CAP Index	National	State	County
Past - 2000	295	507	292
Present - 2010	310	504	300
Projected - 2015	295	473	306

CRIMECAST scores range from 0 to 2000 and indicate the risk of crime at a site compared to an average of 100. A score of 400 means that the risk is 4 times the average and a score of 50 means the risk is half the average.



2010 CAP Index 0 - 99 100 - 199 200 - 399 400 - 799 800 - 2000



CAP Index, Inc.  
Charleston Riverdogs  
360 Fishburne Street  
Charleston, SC 29403-4770

This Site's National CAP Index

**310**

Current Scores (2010)	National	State	County
<b>CAP Index</b>	<b>310</b>	<b>504</b>	<b>300</b>
Homicide	458	573	365
Rape	373	404	238
Robbery	274	489	298
Aggravated Assault	374	512	328
Crimes Against Persons	358	525	325
Burglary	152	169	126
Larceny	159	175	138
Motor Vehicle Theft	118	219	122
Crimes Against Property	132	155	117

Past Scores (2000)	National	State	County
<b>CAP Index</b>	<b>295</b>	<b>507</b>	<b>292</b>
Homicide	399	491	324
Rape	330	403	209
Robbery	269	502	304
Aggravated Assault	318	443	288
Crimes Against Persons	313	472	294
Burglary	173	210	129
Larceny	155	190	118
Motor Vehicle Theft	114	233	139
Crimes Against Property	147	192	118

CAP Index	National	State	County
Past - 2000	295	507	292
Present - 2010	310	504	300
Projected - 2015	295	473	306

Future Scores (2015)	National	State	County
<b>CAP Index</b>	<b>295</b>	<b>473</b>	<b>306</b>
Homicide	460	566	352
Rape	352	365	248
Robbery	261	465	304
Aggravated Assault	349	489	346
Crimes Against Persons	333	494	337
Burglary	132	144	122
Larceny	152	164	150
Motor Vehicle Theft	110	192	116
Crimes Against Property	129	147	129

CRIMECAST scores range from 0 to 2000 and indicate the risk of crime at a site compared to an average of 100. A score of 400 means that the risk is 4 times the average and a score of 50 means the risk is half the average.

**Notes:**

Joseph P. Riley, Jr. Park  
.....  
.....  
.....  
.....  
.....

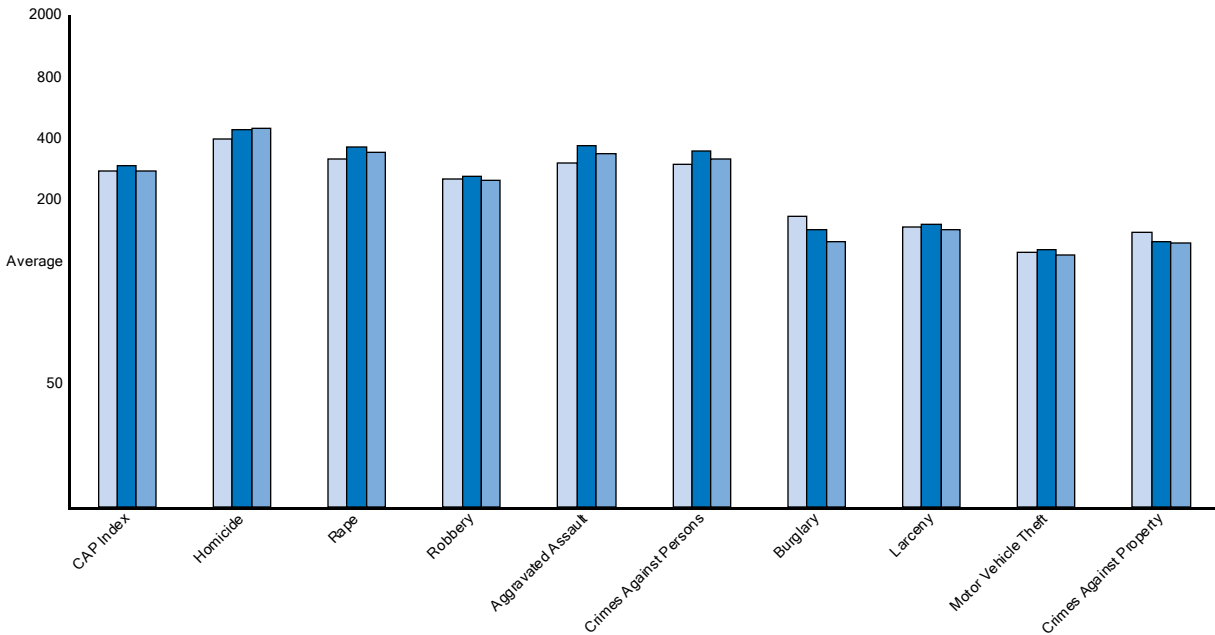


CAP Index, Inc.  
Charleston Riverdogs  
360 Fishburne Street  
Charleston, SC 29403-4770

This Site's National CAP Index

**310**

The National Graph indicates the risk of crime at a given site in comparison to the national average. The ten (10) CRIMECAST scores are provided for current, past and future time periods. Examination of CRIMECAST scores over the 3 time periods indicates whether the site's crime risk is increasing, decreasing or remaining stable. The National Graph should be used when making comparisons between sites because a constant reference point is used.



	CAP Index	Homicide	Rape	Robbery	Aggravated Assault	Crime Against Persons	Burglary	Larceny	Motor Vehicle Theft	Crime Against Property
Past - 2000	295	399	330	269	318	313	173	155	114	147
Current - 2010	310	458	373	274	374	358	152	159	118	132
Future - 2015	295	460	352	261	349	333	132	152	110	129

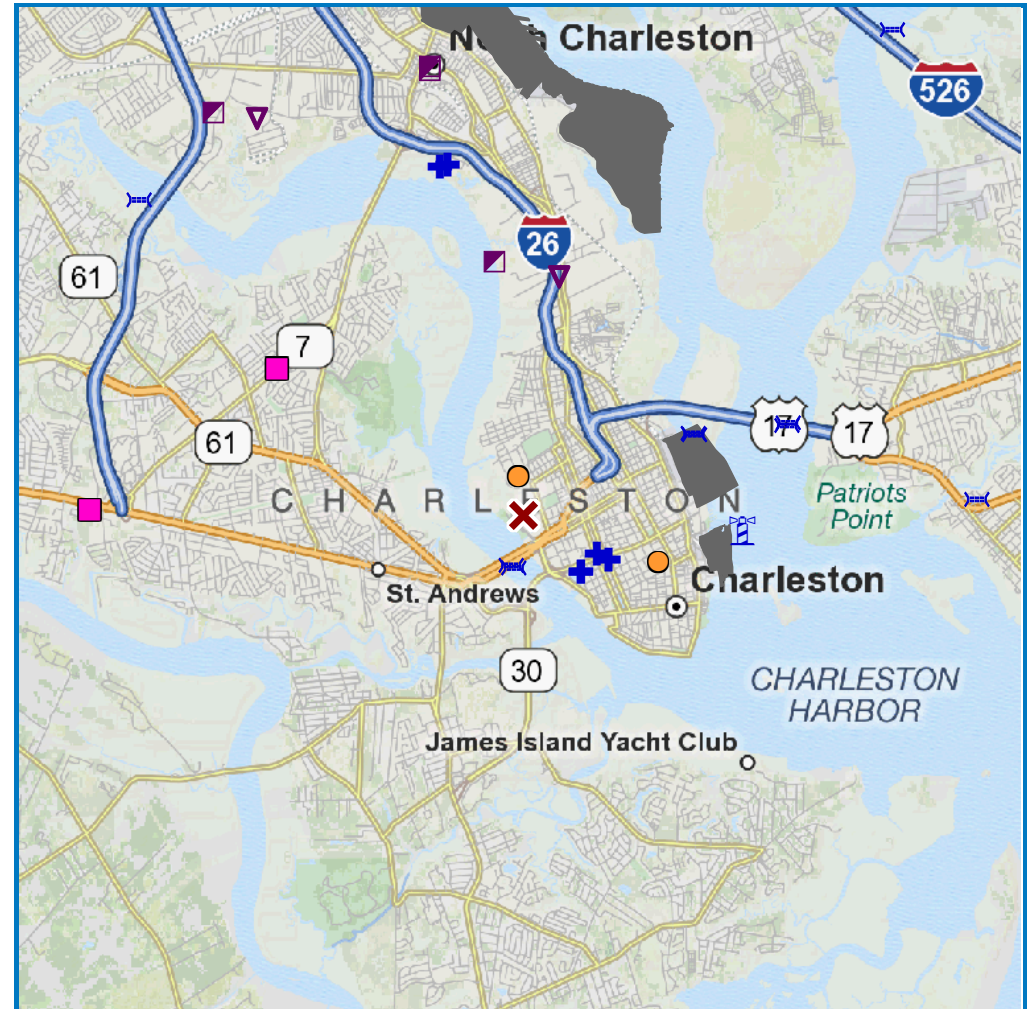
CAP Index, Inc.  
Charleston Riverdogs  
360 Fishburne Street  
Charleston, SC 29403-4770  
Lat: 32.7903, Lon: -79.9597

This Site's National CAP Index

**310**

Airports Intl.	Airports Regl.	Amusement
Bridges / Tunnels	Chemical Plants	Colleges
Dams	Hospitals	Malls
Military Bases	Nuclear Plants	Oil Facilities
Ports	Power Plants	Prisons
Sports Venues	Train Stations	US Courts

The CAP Index Proximity Analysis is based on US data and other public records in the geographic area under review. Although these data and public records are considered highly reliable, CAP Index, Inc. is not able to vouch for their completeness or accuracy. Nevertheless, our statistical analysis as expressed in Reports, Maps, loss experience validations or other services must assume that these data, as recorded and compiled by the various governmental agencies and other sources, are in fact complete and accurate.



0 miles 0.5 1

CAP Index, Inc.  
Charleston Riverdogs  
360 Fishburne Street  
Charleston, SC 29403-4770

This Site's National CAP Index

**310**

**Bridges / Tunnels**

Proximity (mi.)	ID	Sitename	City	State	ZIP
0.49	BT450084	US Hwy 17	Charleston	SC	29407
0.52	BT450065	Savannah Hwy	Charleston	SC	29407
1.93	BT450070	Septima Clark Expy	Charleston	SC	
1.93	BT450071	Septima Clark Expy	Charleston	SC	
2.82	BT450090	US Hwy 17	Mount Pleasant	SC	
2.85	BT450083	US Hwy 17	Mount Pleasant	SC	
4.57	BT450007	Coleman Blvd	Mount Pleasant	SC	29464
4.93	BT450052	Mark Clark Expy	Charleston	SC	29414
6.12	BT450026	I-526	Charleston	SC	29492

**Chemical Plants**

Proximity (mi.)	ID	Sitename	City	State	ZIP
2.41	CP45011	Palmer Logistics Llc	Charleston	SC	29405
4.75	CP45006	Brenntag Incorporated	Charleston	SC	29405

**Colleges**

Proximity (mi.)	ID	Sitename	City	State	ZIP
0.4	COL45004	Citadel, The	Charleston	SC	29409
1.46	COL45009	College of Charleston	Charleston	SC	29424

CAP Index, Inc.  
Charleston Riverdogs  
360 Fishburne Street  
Charleston, SC 29403-4770

This Site's National CAP Index

**310**

**Hospitals**

Proximity (mi.)	ID	Sitename	City	State	ZIP
0.82	H45066	Roper Hospital - Charleston	Charleston	SC	29403
0.82	H45017	Charleston Memorial Hospital	Charleston	SC	29403
0.84	H45052	Medical University Hospital	Charleston	SC	29403
0.98	H45011	Bon Secours - St. Francis Xavier Hospital	Charleston	SC	29403
3.58	H45018	Charter Charleston Behavioral Hlth Sys	Charleston	SC	29405
3.59	H45067	Roper Hospital North Inc	North Charleston	SC	29405

**Malls**

Proximity (mi.)	ID	Sitename	City	State	ZIP
2.83	M45004	Ashley Landing	Charleston	SC	29407
4.29	M45009	Citadel Mall	Charleston	SC	29407

**Military Bases**

Proximity (mi.)	ID	Sitename	City	State	ZIP
2.18	USM310	Port of Charleston	Charleston	SC	29403
2.21	USM311	Port of Charleston	Charleston	SC	29401
6.16	USM308	Charleston Naval Complex	North Charleston	SC	29405

CAP Index, Inc.  
Charleston Riverdogs  
360 Fishburne Street  
Charleston, SC 29403-4770

This Site's National CAP Index

**310**

**Ports**

Proximity (mi.)	ID	Sitename	City	State	ZIP
2.23	SP4501	Charleston	Charleston	SC	

**Power Plants**

Proximity (mi.)	ID	Sitename	City	State	ZIP
2.54	PP45038	Hagood	Charleston	SC	29407
4.52	PP45019	Cogen South	North Charleston	SC	29405
4.56	PP45014	Charleston Resource Recovery Facility	North Charleston	SC	29405
5.04	PP45028	Faber Place	North Charleston	SC	29405

CAP Index, Inc.  
Charleston Riverdogs  
360 Fishburne Street  
Charleston, SC 29403-4770

This Site's National CAP Index

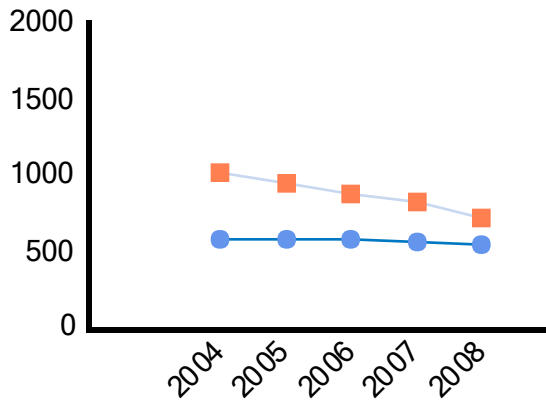
**310**

These data are drawn from the FBI's Uniform Crime Reports (UCR). The data are for the UCR area (city and state) in which the current site resides. The local rates of Crimes Against Persons and Crimes Against Property per 100,000 people are shown in the charts below, along with the national rates per 100,000. The ratios of local rates to national rates are also provided for the five most recent years for which UCR data are available. A rate ratio of 2.0 means the local rate is twice the national average; a ratio of 0.5 means it is half the national average. The table to the right provides UCR data for each crime type for the most recent year for which UCR data are available.

Although FBI UCR data and other public records are considered highly reliable, CAP Index is not able to vouch for their completeness or accuracy. Nevertheless, our statistical analysis must assume that these data, as recorded and compiled by the various governmental agencies and other sources, are in fact complete and accurate.

	Local Count	Local Rate	U.S. Rate	Rate Ratio
Homicide	14	13	6	2.0
Rape	60	54	31	1.7
Robbery	288	258	196	1.3
Agg. Assault	438	392	315	1.2
<b>Persons</b>	<b>800</b>	<b>717</b>	<b>548</b>	<b>1.3</b>
Burglary	724	648	798	0.8
Larceny	3,399	3,044	2,509	1.2
Auto Theft	412	369	382	1.0
<b>Property</b>	<b>4,535</b>	<b>4,062</b>	<b>3,689</b>	<b>1.1</b>
<b>TOTAL</b>	<b>5,335</b>	<b>4,779</b>	<b>4,237</b>	<b>1.1</b>

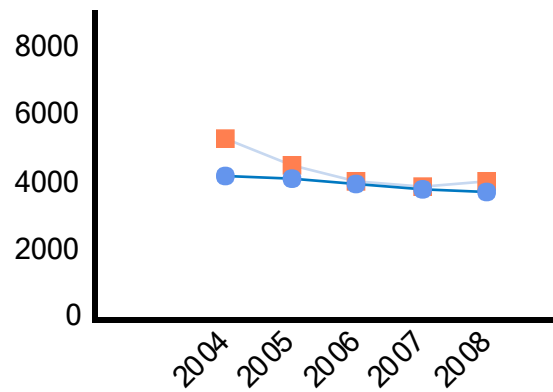
Crimes Against Persons



—■— Local Rate —●— U.S. Rate

	2004	2005	2006	2007	2008
Local Rate	1,023	943	886	831	717
U.S. Rate	573	577	582	566	548
Rate Ratio	1.8	1.6	1.5	1.5	1.3

Crimes Against Property



—■— Local Rate —●— U.S. Rate

	2004	2005	2006	2007	2008
Local Rate	5,321	4,474	4,021	3,882	4,062
U.S. Rate	4,180	4,074	3,917	3,796	3,689
Rate Ratio	1.3	1.1	1.0	1.0	1.1

# About This Report

# CRIMECAST®

A Data Driven Approach to Protecting your Company

The CAPpremium Report is designed to identify accurately the risk of personal and property crimes at any location in the United States. CRIMECAST scores are provided for any specific location in comparison to national, state and county averages. The scores are scaled so that a value of 100 is equal to the national, state and/or county averages. Thus, a CAP Index of 200 is twice the average, while a score of 50 is one-half of the average.

## PAGES OF THE CAPpremium REPORT

A CAPpremium Report includes a Site Map, a CRIMECAST Site Report of national, state and county scores, a detailed National Graph that shows time trend data for your site, FBI Uniform Crime Report (UCR) Data for your location, and a Proximity Analysis Map and Report that examines nearby points of interest. The CAPpremium report also includes Frequently Asked Questions and Terms and Conditions. These components are described below.

### Site Report Map

High quality, color-coded Site Report Maps depict the crime risk surrounding each of a customer's locations. These maps show how the composite CRIMECAST scores are computed for each site.

The Site Report Map shows "CAP Index" scores in comparison to the national average for the current time period. The CRIMECAST scoring methodology involves the creation of two circles around the site in question:

- On a 1:3 Site Report Map: the first circle at a maximum radius of one (1) mile or a population threshold of 25,000 people, and the second circle at a maximum radius of three (3) miles or a population threshold of 100,000 people.

- On a 2:6 Site Map: the first circle at a maximum radius of two (2) miles or a population threshold of 100,000 people, and the second circle at a maximum radius of six (6) miles or a population threshold of 400,000 people.

Both circles are shown on the Site Map, along with the CRIMECAST scores for each census tract that falls within these circles.

Site Maps can enhance the interpretation of a CRIMECAST assessment. For example, a map can show whether a high CRIMECAST score derives from high crime risk in the immediate vicinity of a site or whether the risk of crime is from a more distant neighborhood.

### Site Report Scores

The Site Report is a one-page report that shows national, state and county CRIMECAST scores for each location. There are 30 CRIMECAST scores relative to the national average, 30 relative to the state average and 30 relative to the county average.

### National Trending Graph

The National Trending Graph indicates the risk of crime at a given site in comparison to the national average. The ten (10) CRIMECAST scores described in the report are provided for the "Current" time period, for a time period in the "Past", and for a time period "Projected" into the future. Examination of CRIMECAST scores over the three (3) time periods indicates whether the site's crime risk is increasing, decreasing or remaining stable.

### Proximity Analysis Maps and Reports

Proximity Analysis is a consequence-management tool that identifies potential targets, threats, or other points of interest near your location, providing a broader perspective on each location's security



## CRIMECAST®

# About This Report

environment. No matter how well you defend your own sites against crime and loss; there could be properties, businesses or organizations proximate to yours that may pose a threat or risk of business interruption to your operations. Aside from general targets such as landmarks, utilities or transportation centers, Proximity Analysis mapping tools can be tailored to include other points of interest to your business.

## FBI Uniform Crime Report (UCR) Data

This information is drawn from the FBI's Uniform Crime Reports (UCR). The UCR database includes "official statistics" reported to the FBI by city and state police departments. The UCR Report shows how reported crimes against persons and property have changed over time for the city or state that contains the site in question. Crime counts and rates per 100,000 people are provided, along with the comparable rates for the U.S. as a whole. The Rate Ratio provides a comparison between the Local and U.S. crime rates.

## CAP Score Explanation

All scores are based on a scale of 0 to 2000, with 0 representing the lowest risk and 2000 the highest – 100 is average. A score of 600 is 6 times higher than average and a score of 25 means the risk is 1/4 the average.

Each site receives 90 crime risk scores provided for 3 geographic levels and 3 time periods.

**National** scores provide the risk at the site compared to the entire US, allowing for the ranking and comparison to any other sites.

**State** scores compare the site to the average risk of the state in which it resides.

**County** scores compare the site to the average risk of the County in which it resides.

Past, Current and Projected crime scores are provided to allow for trending.

**Census Tract Delineation** - Census tracts are outlined in blue. There are approximately 65,322 census tracts in the US. Each tract contains approximately 4,562 residents with similar socio-economic backgrounds. CAP scores each tract alone to determine its risk of crime. Tracts receive a numeric score and a coinciding risk shading.

The **CAP Index score** represents the overall risk of crime. Crimes Against Persons is a weighted average of Homicide, Rape, Robbery, and Aggravated Assault. Crimes Against Property is a weighted average of Burglary, Larceny and Motor Vehicle Theft.

### CAP premium SITE REPORT

Sears Tower  
233 S Wacker Dr  
Chicago, IL 60606-6306  
Lat: 41.879, Lon: -87.6367

1:3 Site Report Map

This Site's National CAP Index

**878**

Current Scores (2008)	National	State	County
<b>CAP Index</b>	<b>878</b>	<b>881</b>	<b>488</b>
Homicide	871	667	389
Rape	862	720	384
Robbery	881	941	525
Aggravated Assault	783	1016	624
Crimes Against Persons	802	938	550
Burglary	494	638	395
Larceny	831	1050	731
Motor Vehicle Theft	389	499	356
Crimes Against Property	677	861	586

CAP Index	National	State	County
Past - 2000	824	780	440
Present - 2008	878	881	488
Projected - 2013	887	943	514

CRIMECAST scores range from 0 to 2000 and indicate the risk of crime at a site compared to an average of 100. A score of 400 means that the risk is 4 times the average and a score of 50 means the risk is half the average.

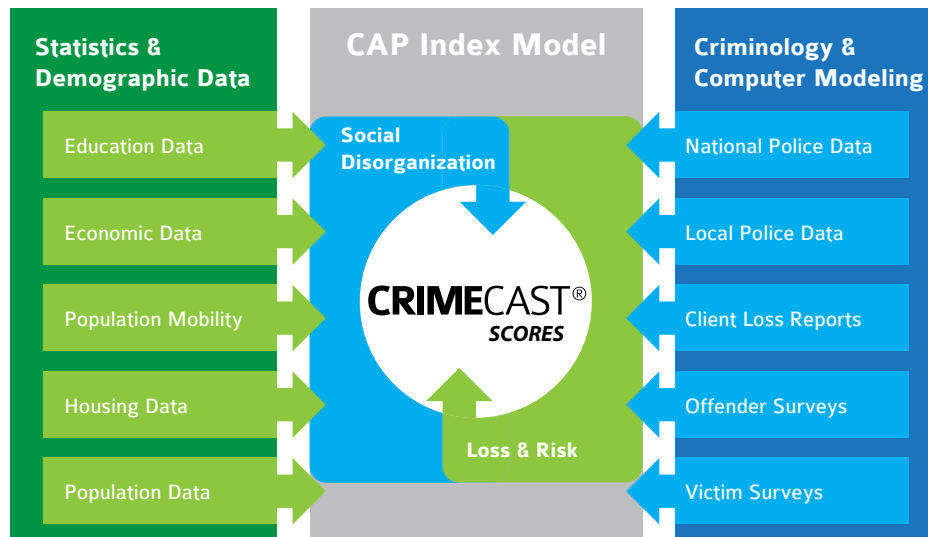


**Radius Thresholds** - CAP utilizes a radius threshold analysis to determine a site's overall risk. In this sample, the **inner radius** represents 1 mile or a population of 25,000, equaling 2/3 of the overall score. The **outer radius** represents 3 miles or a population of 100,000 providing the remaining 1/3. In addition to this **standard methodology** shown above, an **expansive methodology** (applying a 2 mile and 6 mile radius) may be used.

# About This Report

# CRIMECAST®

A Data Driven Approach to Protecting your Company



CRIMECAST® products are derived from an advanced evaluation system designed to accurately identify the risk of personal and property crimes at any location in the United States. The CRIMECAST model is based upon the strong relationship that exists between a neighborhood’s “social disorganization” and the amount of crime that is perpetrated there. As shown in the above diagram, the CRIMECAST model was developed by correlating demographic data, survey information and other databases with known indicators of crime.

The CRIMECAST model produces probability measures that place any location in the United States in context with national, state and county levels of criminality. We refer to these probability measures as CRIMECAST scores. CRIMECAST scores focus on Crimes Against Persons and Property. Specifically, the types of crime examined in a CRIMECAST report are:

Crimes Against Persons:	Homicide, Rape, Robbery, and Aggravated Assault
Crimes Against Property:	Burglary, Larceny, and Motor Vehicle Theft

These are the same seven crime types listed in the FBI’s Uniform Crime Reports (UCR) as “Part 1 Offenses.” The FBI defines these offenses as follows:

Homicide	Causing the death of another person without legal justification or excuse.
Rape	Unlawful sexual intercourse by force or without legal or actual consent. Attempts to commit rape and assaults of a sexual nature are also included.
Robbery	Unlawful theft of money by force or threats from another person in a face-to-face encounter.
Aggravated Assault	Unlawful intentional inflicting of serious bodily injury on another person or the unlawful threat or attempt to inflict bodily injury or death by means of a deadly or dangerous weapon with or without the actual inflicting of any injury.
Burglary	Illegal entering of any property with the intent to commit a felony or larceny.
Larceny	Illegal taking of property, other than an automobile, by stealth and without force and with no intention of returning that property.
Motor Vehicle Theft	Illegal taking or attempted taking of a motor vehicle with no intention of returning it.

There are ten (10) different CRIMECAST scores—one for each of the seven crime types listed above, an overall Crimes Against Persons score, an overall Crimes Against Property score, and an overall “CAP Index.” The CAP Index is a weighted average of the homicide, rape and robbery scores. We emphasize these three (3) crimes because, in a business environment, they pose the greatest danger to employees and customers. The scores are provided for the “Current” time period, for a time period in the “Past” and for a time period “Projected” into the future.



## CRIMECAST®

CRIMECAST is a trademark of CAP Index, Inc. Please note terms and conditions as presented on <http://www.capindex.com/terms.html>

# Frequently Asked Questions

# CRIMECAST®

A Data Driven Approach to Protecting your Company

This section answers the most frequently asked questions about CAP Index, Inc. and its services. Specific attention is paid to the history and validity of our Model, its accuracy and usefulness in predicting crime, and its effectiveness in helping to support the legal opinions of Attorneys, Expert Witnesses and Security Consultants.

## Who is CAP Index?

CAP Index is the most recognized crime forecasting expert in the United States. Our associates have decades of experience in the security industry, survey research, academia, the law, and mapping and information systems technology. Our research and methodologies reflect the cutting edge practices in analyzing crime trends, forecasts and prevention.

CAP Index has been providing CRIMECAST™ crime forecast information to companies in all industries since 1988. These companies use these data for security resource allocation, protection of employees and customers, site selection, real estate portfolio management, and defense against premises security litigation.

CAP Index crime forecasts have been so extensively utilized in such a wide range of industries, that the question routinely asked now is not, "Did you determine the foreseeability of crime at your location?" but "Did you CAP your site?"

## What is a CRIMECAST Report?

A CRIMECAST Report is a forecast, intended to indicate the likelihood of crimes occurring at any location in the United States. This report is used by security professionals, attorneys, consultants, expert witnesses and managers. CRIMECAST scores are provided for any specific location in comparison to

national, state and county averages. The scores are scaled so that a value of 100 is equal to the national, state and/or county averages. Thus, a CAP Index of 200 is twice average, while a score of 50 is one-half of average.

## How does CAP Index, Inc. forecast crime?

By employing sophisticated computer modeling techniques similar to those used to forecast the weather, CAP Index is able to forecast where criminal activity is likely to occur.

It is an accepted criminological and policing theory that the amount of social disorganization and decline in a neighborhood has a direct correlation to the amount of crime that can be predicted to occur there. CAP Index has created a statistical forecasting model that correlates the demographic data described above with survey information and other databases with known indicators of crime. This model provides a forecast of criminal activity for any location in the United States with a high degree of accuracy.

## What are the specific components of a CRIMECAST score?

The CAP Index crime forecasting model incorporates a wide variety of information from the following sources: neighborhood demographic and physical housing data; FBI Uniform Crime Reports; National Crime Surveys; local police data; and company crime loss reports from all of the major industries. It is important to note that ethnicity is NOT a factor in our model.

Our information is updated on an on-going basis, and we release an annual database update each year.



## CRIMECAST®

CRIMECAST is a trademark of CAP Index, Inc. Please note terms and conditions as presented on <http://www.capindex.com/terms.html>

# Frequently Asked Questions

**CRIMECAST**<sup>®</sup>

A Data Driven Approach to Protecting your Company

## What sources does CAP Index use to validate CRIMECAST scores?

In addition to the core elements of our research, we rely upon continuous data input from our clients to further validate our model. As a result of years of client and industry-specific research, CAP Index has compiled the largest database of company crime loss data in the United States. We combine these data with FBI data and local police crime counts to provide the most accurate crime risk assessments available from any source in the country. In effect, each client we serve has the potential to strengthen the next.

## What is the difference between national, state and county scores?

The national score compares the crime risk at a specific location to the crime risk at “Main Street, USA”. The national score allows you to compare multiple sites, regardless of location, to each other with a common baseline. Thus, you can compare the risk at a location in New York City with a location in Los Angeles without having to interpret subjective police data.

The state score compares a location to the rest of the properties in the state in which the site resides, rather than to the country as a whole. We have found that clients operating multiple locations within the same state prefer this additional view of their risk.

The county score compares the location to the rest of the properties in the county in which the site resides. This is important because in litigation, juries are chosen from the local environment. Their perceptions and anxieties about crime will be the result of their experiences in that county, not the nation. Thus, the security manager who finds him or

herself in a premises security litigation is well advised to be aware of the local as well as the national crime risks at his or her sites.

## Are the CRIMECAST scores alone sufficient to evaluate the risk at a location?

Many corporations rely solely on CAP Index for their crime risk assessment. We advise, however, that companies make an effort to accumulate whatever data are available for a given location, including internal loss reports, information from law enforcement, industry best practices, and any other “due diligence” indicated by local, state and national standards, laws or regulations.

## How was the CAP Index Model created and how is it validated?

The CAP Index Model was created and is continuously maintained by a team of criminologists, statisticians, security and mapping professionals. The Model contains the weighted averages of dozens of demographic variables as well as numerous sources of historical reported crime. We conduct ongoing validation research with individual clients and industry groups, comparing their actual incident history to our projections. The demographic databases included in the Model are updated on an annual basis, ensuring the most up-to-date crime forecasting information available.

## What is the difference between the FBI's Uniform Crime Reports (UCR) and CAP Index scores?

The UCR represents historical crime counts voluntarily provided to the FBI by most, but not all of the police departments in the United States and is subject to differences in their reporting practices.



**CRIMECAST**<sup>®</sup>

# Frequently Asked Questions

# CRIMECAST®

A Data Driven Approach to Protecting your Company

It is collected to give a general overview of the rate of crime in U.S. cities by measuring the number of incidents per 100,000 population. The UCR does not recognize any one section of a city as more or less risky than another.

CAP Index scores were created to be used by businesses to help make informed security-related decisions. The data characteristics measured by CAP Index, and the presentation of our scores are consistent across the United States. CAP Index scores provide a site-specific overview of the risk of crime derived by a radius around the location, independent and unaffected by jurisdictional or other man-made boundaries.

The UCR remains a useful tool in measuring the overall crime rate in cities across the United States, but does not address in any way the site-specific likelihood of crime.

## Are CAP Index reports used frequently to support legal opinions in Inadequate Security and Premises Liability lawsuits?

Yes. Since incorporating in 1988, CAP Index has served thousands of corporate clients interested in protecting their employees, visitors and other invitees. Many of our clients share our data internally among their Security, Real Estate, Risk Management and Legal Departments and utilize them whenever appropriate.

We have also provided reports to over 500 Attorneys, Security Consultants, and Expert Witnesses to help support their positions in court and pre-court proceedings.

## Has CAP Index's crime forecasting Model been challenged in court?

Yes, on numerous occasions. As such a unique tool, the CAP Index Model is frequently challenged, but to our knowledge has never been disallowed or proven to be invalid by a court. CAP Index's co-founder, Robert M. Figlio, PhD. successfully testified to the Model's validity in cases such as Bannister vs. Temple University. Many of our new Legal, Consulting and Expert Witness clients come to us after encountering and unsuccessfully challenging our reports in court.

## Does CAP Index's crime forecasting Model promote "redlining"?

No. Redlining is an illegal activity, undoubtedly still practiced by some companies today, that amounts to discriminating against a community due to a high proportion of racial or ethnic minority residents. The CAP Index Model measures dozens of demographic variables against historical occurrences of crime. Race and ethnicity, the key factors in redlining, are not among the variables. Our research shows that approximately one-third of all census tracts in the United States predominantly populated by minorities achieve below-average CAP Index scores, further supporting our position that race is not a determining factor in predicting crime.

## Does the presence of an above-average CAP Index score automatically make a company liable for any crime on their property?

No. The majority of CAP Index's clients utilize our data to determine their risk of crime in order to address it properly. It is entirely possible and appropriate for a business to identify high crime risk, implement appropriate security measures, and operate a safe and profitable business. The risk of crime alone does not dictate either that a company should not locate in an area, or that they assume responsibility for any and all criminal acts.



CRIMECAST®

# Terms and Conditions

# CRIMECAST®

A Data Driven Approach to Protecting your Company

The personnel of CAP Index, Inc. endeavor to perform our work in the most professional manner, using the most qualified people in our company or at our disposal to meet the needs of our customers. We strive to improve our databases and technology in a reasonable and proper manner.

The data provided to our clients with respect to a geographic area under review are based on United States census data, other public records, and data licensed from third parties. Although these data are considered highly reliable, we are not able to vouch for their completeness or accuracy, and in some instances licensed data showing facility locations may become out-dated. Nevertheless, our statistical analysis and other reports must assume that these data, as recorded and compiled by the various governmental agencies or private licensors, are in fact complete, accurate and current. Furthermore, if this report includes our conclusions with respect to crime risk by site, those conclusions are based upon statistical analysis, and therefore constitute probabilities of criminal activity over a period of time, not certainties. All reasonable efforts have been made to ensure that the data provided to our clients are accurate and useful. **HOWEVER, BY REASON OF THE FOREGOING, AND BECAUSE WE ARE UNABLE TO ANTICIPATE ALL OF THE USES TO WHICH OUR CLIENTS INTEND TO PUT OUR STATISTICAL ANALYSIS, CONCLUSIONS OR REPORTS, WE WILL NOT BE RESPONSIBLE FOR ANY DAMAGES, WHETHER DIRECT OR INDIRECT, OR ANY COSTS OR EXPENSES INCURRED BY A CLIENT, WHETHER INCIDENTAL, CONSEQUENTIAL, OR OTHERWISE, BY REASON, OR AS A RESULT OF A CLIENT'S USE OF, OR RELIANCE UPON OUR STATISTICAL ANALYSIS, CONCLUSIONS, OR REPORTS.** In no event shall we be liable for an amount in excess of twice the cost of this report. CAP INDEX, INC. MAKES NO

WARRANTY, EITHER EXPRESS OR IMPLIED, AND EXPRESSLY DISCLAIMS ANY WARRANTIES OF MERCHANTABILITY AND OF FITNESS FOR A PARTICULAR PURPOSE.

By accepting this report and acting upon it, the client agrees as follows: the client shall defend and indemnify CAP Index, Inc., its directors, officers and employees from any liability and expense (including reasonable attorneys' fees) imposed upon or incurred by CAP Index, Inc. as a result of any claim, demand, liability, suit or similar occurrence arising out of the intentional or negligent misuse of this report or its contents by the client, an employee, agent, or anyone acting on behalf of the client; provided that CAP Index, Inc. shall promptly notify the client of any such claim, and permit the client to control the defense or resolution thereof, and CAP Index, Inc. shall fully cooperate with the client in connection therewith.

This report has been prepared by CAP Index, Inc. for the exclusive use of the intended recipient. Neither this report nor any of its content may be copied, distributed, or disseminated to any person or entity in any form without the prior express written permission of CAP Index, Inc.

You agree not to modify, decompile, disassemble, decrypt, extract, or otherwise reverse engineer any CAP Index, Inc. product, or any other part thereof, for any reason.

Payment for the data provided under the foregoing terms and conditions shall be due upon receipt of an invoice from CAP Index, Inc., unless otherwise expressly provided by separate written agreement between the client and CAP Index, Inc.



## CRIMECAST®

CRIMECAST is a trademark of CAP Index, Inc. Please note terms and conditions as presented on <http://www.capindex.com/terms.html>



CAP Index® is the world leader in crime forecasting. For over 20 years we have provided innovative solutions for Fortune® 1000 corporations and government agencies looking to minimize a broad range of losses, including shortage, general liability, fraud, lawsuits and crimes against persons and property. We provide crime forecasting models, as well as loss mitigation solutions, to 81 of the top U.S. Fortune® 100 Companies, as well as leading retailers, financial institutions, insurance companies and quick service restaurant (QSR) companies nationwide.

The CAP Index services assist our clients to better understand and proactively manage their business risks. CAP Index scores help businesses better understand risks and threats and their effect on safety and profitability.

## CRIMECAST Data & Reports

Our core analytics technology enables us to generate predictive reports and maps that provide precise information by location, of crime and loss history via a scoring mechanism designed to objectively measure risk. Available in North America, and now the United Kingdom.

## Corporate Headquarters

The Commons at Lincoln Center  
150 John Robert Thomas Drive  
Exton, PA 19341  
USA

## US and Canada

1-800-CAP-RISK  
(1-800-227-7475)

## Outside US and Canada

+1 610-903-3000

## General Email

[info@capindex.com](mailto:info@capindex.com)

## On the Web

[www.capindex.com](http://www.capindex.com)