



News Release

EmerGeo Mapping Provides Western Australia Emergency Management with Coordinated Mapping.

EmerGeo's simplicity, tailorability, mobility and interoperability tested and proven.

Full story published by Spatial Vision, an EmerGeo Reseller and ESRI Business Partner, at <http://www.spatialvision.com.au/html/success-story-14.htm>

VANCOUVER, B.C., December 23, 2006



In October 2004, the Western Australian Government approved the implementation of the **Shared Land Information Platform (SLIP)**. The objective for SLIP is to enable improvements for business processes and systems through provision of a **single point of access to government spatial information**. SLIP is proposed to provide common services for all Western Australian Government, commercial and civil lines of business with a requirement for spatial information.

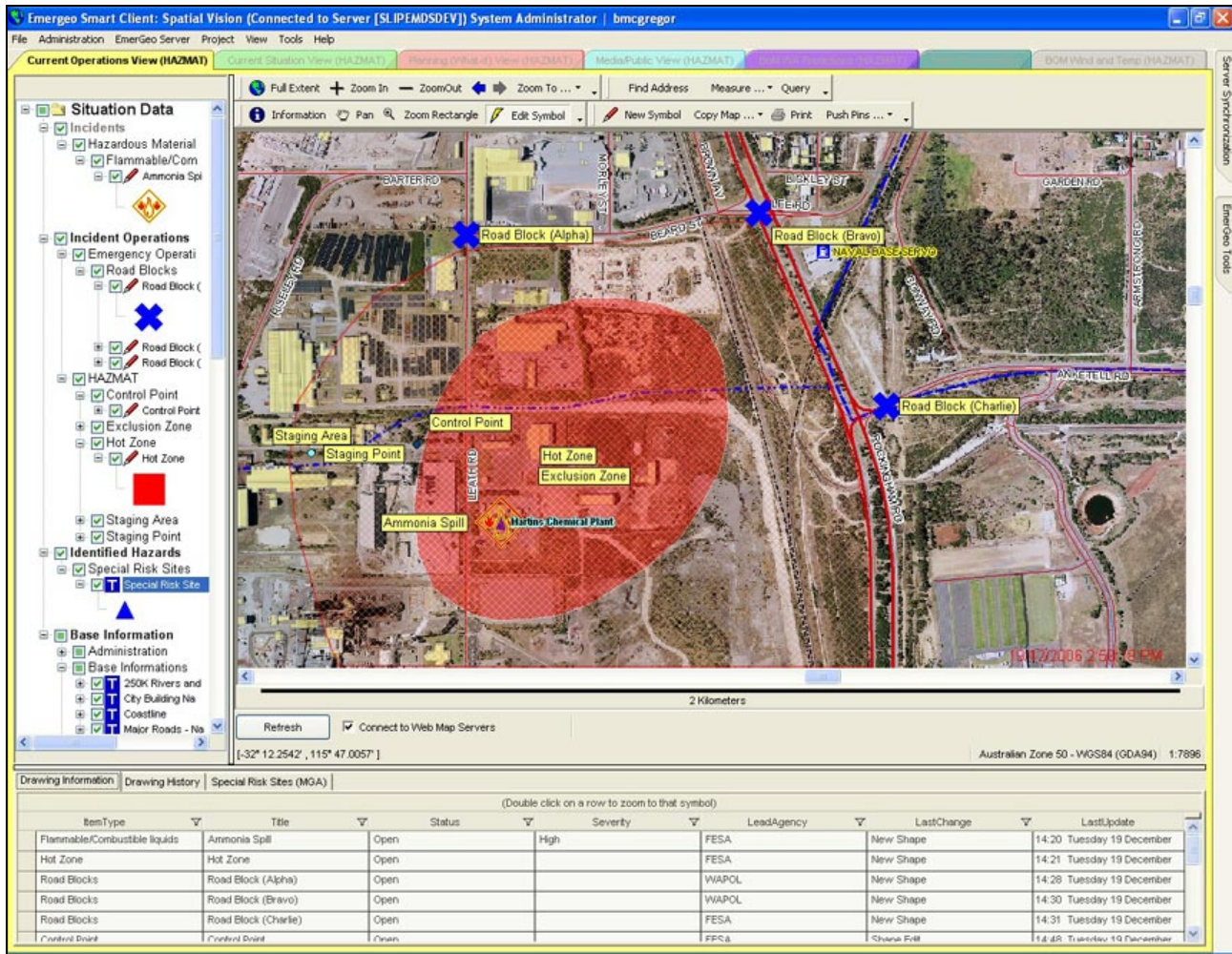
Common services and data are required to support the twenty three hazard situations that are potentially experienced in Western Australia (flood, cyclone, bushfire, search and rescue, dam break, road transport emergencies, etc).

State emergency management plans for each hazard are known as WESTPLANS and are prepared by the responsible Hazard Management Agency (HMA) and allied support organizations to provide strategic, state-level arrangements for managing hazards for which they are responsible. The challenge for the SLIP-EM initiative is to build a cross agency spatial capability that assists in sharing and exchanging incident and planning information that can support the roles of the HMA and all supporting agencies for the respective hazard scenarios.

Operational requirements were used to assess various technology options from which EmerGeo was selected as the application to establish the SLIP-EM pilot mapping services.

EmerGeo is providing a number of strategic benefits in assisting the deployment of the SLIP-EM pilot services, including:

- 1. the ability to access real time data via the Internet;**
- 2. the ability to integrate mapping information from distributed sources;**
- 3. provision of both online and offline capability;**
- 4. the ability to be individually customized or configured for specific hazard and operational needs; and**
- 5. the provision of a simple GIS capability with minimum training requirements.**



EmerGeo's Multi-View (Workgroup Publishing) Capabilities Enables Delivery of the Right Information to the Right People – a Key Requirement of Crisis Management.

EmerGeo can be readily configured to meet a range of scenarios and applications. The pilot system is currently being configured to support the critical information flows and user requirements for an initial set of hazard activities.

For more information on EmerGeo emergency mapping or related crisis management software, please visit <http://www.emergeo.com> or contact Mike Morrow at mmorrow@emergeo.com / (604) 443-5025.

For further information on SLIP-EM, please contact Mark Taylor at (08) 9416 3601.

For further information on SLIP see <http://202.72.132.74/slip/>