

Assessing security in 3 steps through the Asvaco™ software suite

Step 1 – Plan

First of all, you have to **decide the scope** of your security plan. Are you addressing a Site Survey, Threat/Risk/Vulnerability Assessment, Emergency Plan, etc?

Simply pick one or more modules from **our comprehensive list of readily available [Solution Modules](#)** for the Asvaco™ Engine. Each of them addresses a specific issue listing all the relevant topics, the questions to be asked for each topic, the possible answers to each question, the score that every answer is worth, the possible explanations and recommendations, and all useful commentary. **Even organizations having little or no security expertise all can self-assess** based on the know-how of our security subject matter experts, who design and update the modules building on their experience in the most challenging security fields.

If you prefer to use your own security policy we will author **the Solution Module to your exact needs using the scale of your choice.**

Step 2 – Perform

When the module is ready, you **proceed to the field** to ask questions, gather data and inspect. Entering responses and observations directly in the [Asvaco™ Engine](#) avoids the need to build a report after the inspection since it is being built simultaneously.

During the inspection you may **gather plenty of supporting data** (pictures, movies, audio, maps, Word .doc, Excel .xls, PowerPoint .ppt, Adobe .pdf, web links, etc.) and immediately store them within your assessment file as an electronic binder of documentation.

While you perform the inspection, **you have constant control** of the assessment status, quantitative and qualitative score, as well as the exact content of the final report. This will allow you to identify the weakest points during the inspection and focus your attention on them.

The screenshot displays the Asvaco Engine software interface. The title bar reads 'D:\Program Files\Asvaco\Asvaco Station Demo2 - Asvaco Engine'. The menu bar includes 'File', 'Topic', 'Edit', 'View', 'Format', 'Tools', and 'Help'. The main window is divided into several sections:

- Table of Content:** A tree view on the left showing the assessment structure, including 'The Asvaco Station', 'Facilities Identification', 'General Information on Perimeter Barriers', and 'Local Impact'.
- Questionnaire:** A list of four questions with dropdown menus for answers and corresponding scores:
 - 1. Is there some type of physical barrier around this facility? (Yes) [4 Very Good]
 - 2. Does the barrier establish the property line for the facility? (No) [8 Unacceptable]
 - 3. Does this barrier provide coverage for the entire facility? (Yes) [3 Excellent]
 - 4. Which side or sides, do not have a barrier? (0 n/a)
- Narrative:** A text area containing a summary of the findings: 'This facility has some type of physical barrier surrounding the site. The barrier does not establish the property line for the facility. The barrier provides coverage for the entire facility. The barrier connects with all exterior sides of this facility. There are NO TRESPASSING signs posted on the Recommendation'.
- Resources/Notes:** A section with a definition: 'Definition of Barrier: a : something material that blocks or is intended to block passage <highway barriers> such as a fence, wall, etc. b : a natural formation or structure that prevents or hinders movement'.
- Score Chart:** A 3D bar chart at the bottom left showing scores for 'Project', 'Topic', and 'Subtopic' on a scale from 0 to 10.

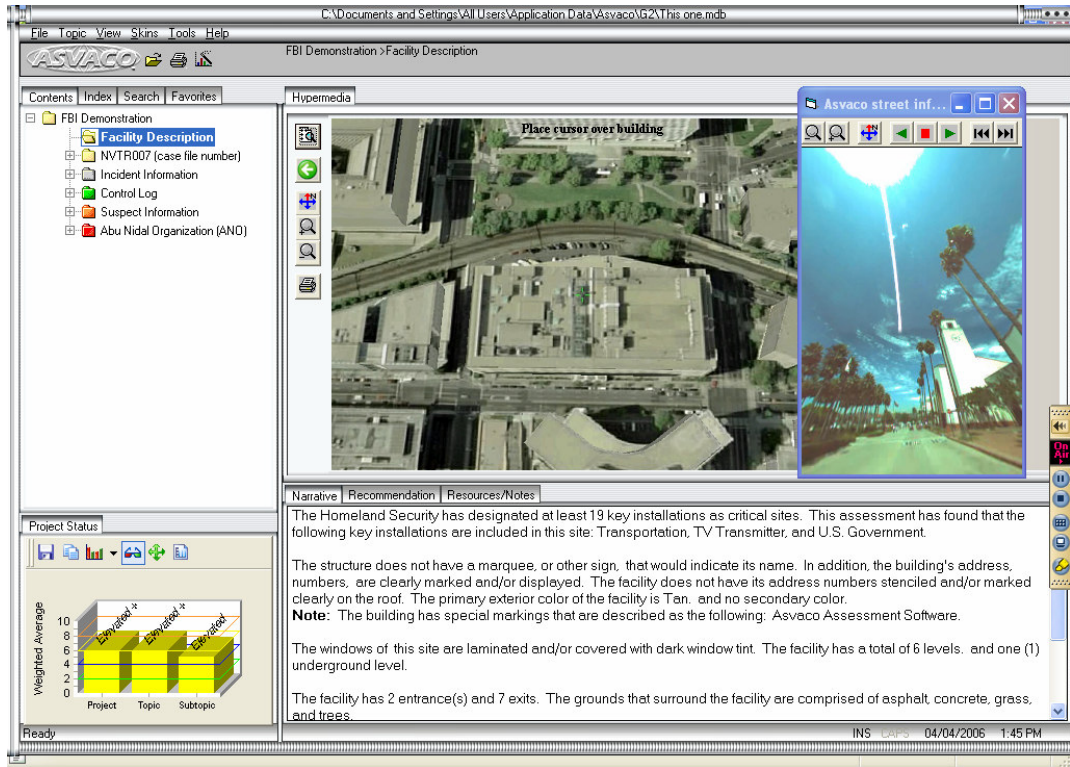
Step 3 – Deliver and use!!

After the inspection is done, **simply print** from a variety of press-ready, deliverable assessment reports, addressing the need of different recipients (executive report for the CEO, detailed reports for the Security Manager, etc.).

You may print them on paper (.pdf) , or export them as Word files that you can finalize at will. The assessment report can also be easily exported to the [Asvaco™ G2](#) which is the report viewer that allows you live access to all the data gathered during the inspection.

While a paper report is static and tends to gather dust on a shelf, **G2 reports are alive.** In

fact speech, sound, movies, livecams, etc. that you have gathered during the inspections couldn't be used in a printed report, but are fully accessible in the G2 Viewer. G2 can even be used by **first response personnel** allowing them fast



access to emergency floorplans, mechanical/electrical/plumbing diagrams, and other documentation and data.

FutureShield markets and develops solution modules for Asvaco™ in North America, Europe and Asia.

FutureShield, Inc. Tel: +1 (416) 675-7835
57 Galaxy Blvd, Unit 6 Fax: +1 (416) 675-7214
Toronto, ON, Canada www.futureshield.net
M9W 5P1 info@futureshield.net

